

Vertical Migration: The largest movement of animals on Earth!

The DEEPEND scientists use many tools to gather information about vertical migration and the deep sea in general. Their work is coordinated from the ship *R/V Point Sur*.



Tool profile: The transducer used sound waves to determine where animals are in the surrounding water. It works similarly to sonar.

Tool profile: MOCNESS is a large trawl net lowered from the back of the ship. It is an efficient way for scientists to gather animal specimens.

When the sun rises, animals return to the darker depths.



Sthenoteuthis pteropus

During the nighttime hours, animals feed close to the water's surface.

Argyropelecus aculeatus



Vertical migration is the movement of animals up and down in the water column over a 24 hour period.

Tool profile: The glider is an autonomous underwater vehicle which moves independently of the *R/V Point Sur*. It uses blue and red light and an optical sensor to gather information about vertical migration.



Pasiphaea sp.



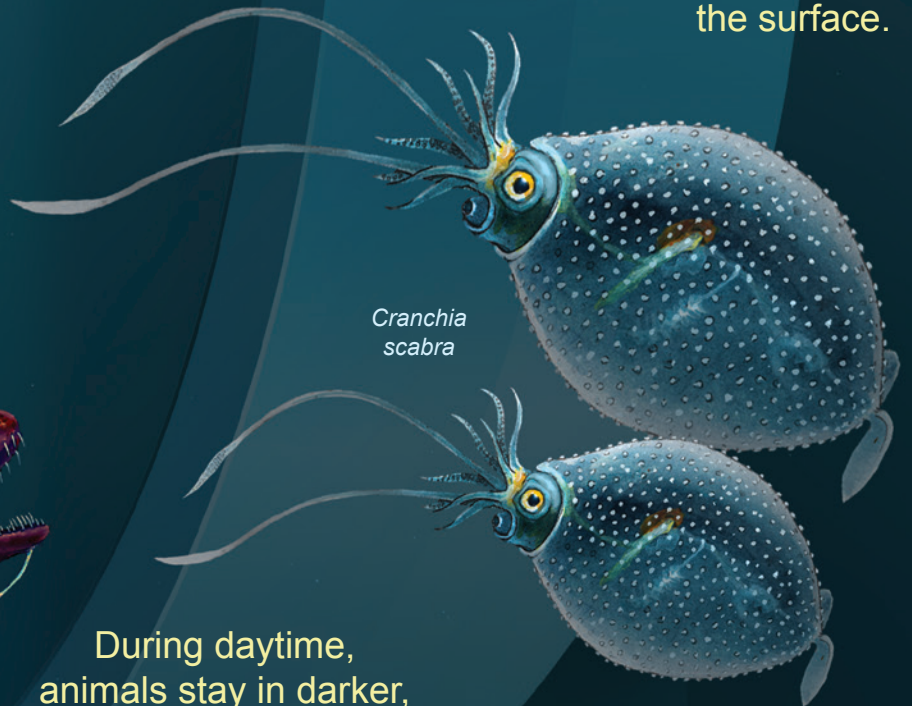
As night falls, animals move toward the surface.

Phronima pelican



The animals shown are just a small representation of the thousands of species that vertically migrate every day.

Cranchia scabra



During daytime, animals stay in darker, cooler waters.

Esoiostoma barbatum



Copyright © 2016 by Oregon Coast Aquarium. All Rights Reserved.



whaletimes.org



oceanscape.aquarium.org



deependconsortium.org